



Color Variants

VL414712

stainless steel

Width 6 1/8" (15.5 cm)

Optional accessories

AA414010

Ventilation moulding for VL 414 next to gas appliance.

Installation Accessories

AD410040

Flexible connecting piece for VL 200 DN 150 flat

AD851041

Connecting piece VL 200 for extension with flat duct DN 150 for an extra deep countertop or for an island installation.

VA420000

Connection strip for combination with other Vario appliances of the 400 series for flush installation

VL414712

Vario 400 series downdraft ventilation stainless steel

Width 6 1/8" (15.5 cm)

Air recirculation with 400 series AR410710 or AR413722 blowers. Air Extraction with AR 400 742, AR 403 722, or AR 401 742 blowers.

Comes without blower

Can be combined perfectly flush with other Vario appliances of the 400 series Precision crafted 1/8-inch stainless steel frame

Solid stainless steel control knobs Highly efficient, low noise ventilation system especially with remote fan unit AR 410 710

Function for automatic, sensor-controlled power adjustment depending on the build-up of cooking vapors Low planning and installation effort.

Output

Noise level depends on the built-in situation.

Features

Control knob with illuminated ring included in delivery.
3 electronically controlled power levels and 1 intensive mode.
Automatic function with sensor-controlled run-on function.
Large-scale metal grease filter with high grease absorption.
Grease filter, dishwasher-safe.
Grease filter and activated charcoal filter saturation indicator.
Airflow-optimised interior for efficient air circulation.
Interval ventilation, 6 min.
Enameled ventilation grill is dishwasher-safe.
Air exhaust bend included in delivery.
Overflow 8.5 oz (250 ml) capacity.
Cooktop-based ventilation control (with suitable cooktop).
Home network integration for digital services (Home Connect) either via cable connection LAN (recommended) or wireless via WiFi.
The use of the Home Connect functionality depends on the Home Connect services, which are not available in every country. For further information please check: home-connect.com.

Consumption data

Consumption data is referred to a configuration with the recirculation blower AR 410 710.
Sound level min. 57 dB / max. 71 dB normal mode.

Planning notes

Please refer to the models and dimensions for recommended configurations of downdraft ventilations and blower units and the needed ducting elements.
For each VL one blower is recommended.
Maximum cooktop width between two VL: 24" (60 cm).
If operated next to gas appliances, the air deflector AA 414 010 is recommended to ensure maximum performance of the cooktop.
Appliance can be snapped into the countertop from above.
Depending on the type of installation - surface- or flush-mounted, with or without cover - the specific location of the cut-out and the control knob positions may vary.
If combining several Vario appliances of the 400 series, a connection strip VA 420 must be placed between the appliances. Depending on the type of installation, the corresponding connection strip must be provided.

Product Features

Operating Mode

Convertible: Ducted / Recirculating

Number of speed settings

Delay Shut off modes

Silence level (dBA)

71

Required accessories

Optional accessories

AA400510, AA414010

Number of lights

Type of lamps used

Total power of the lamps (W)

Grease filter material

Washable stainless steel

Grease filter type

Multilayer cassette

Clean filter reminders

Consumption and connection features

2021-06-16

Page 1

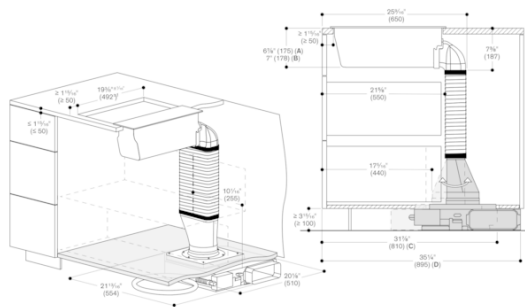
The bearing capacity and stability, in the case of thin countertops in particular, must be supported using suitable substructures. Take into account the appliance weight and additional loads.
Additional instructions for flush mounting:
Flush installation is possible in countertops made of stone, synthetics or solid wood. Heat resistance and watertight sealing of the edges must be observed. For other materials, please consult with your countertop manufacturer.
The groove must be continuous and even, so that uniform placing of the appliance on the gasket is ensured. Do not use discontinuous lining.
The joint width may vary due to size tolerances of the combinations and of the countertop cut-out.

Rating

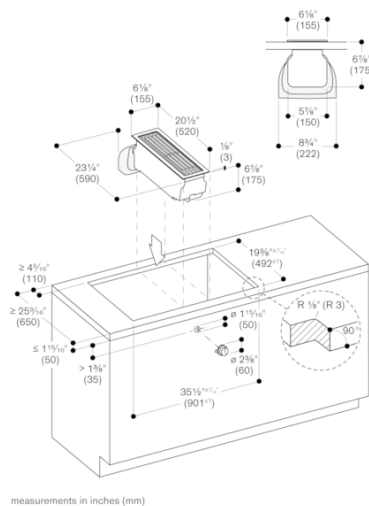
Plan for an ethernet / LAN cable or connect via WiFi.

GAGGENAU

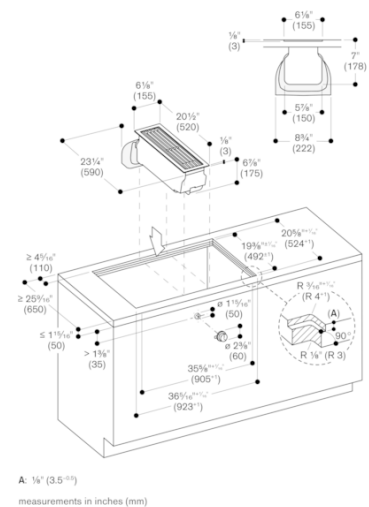
VL414712
Vario 400 series downdraft ventilation
stainless steel
Width 6 1/8" (15.5 cm)
Air recirculation with 400 series
AR410710 or AR413722 blowers. Air
Extraction with AR 400 742, AR 403 722,
or AR 401 742 blowers.
Comes without blower
2021-06-16
Page 2



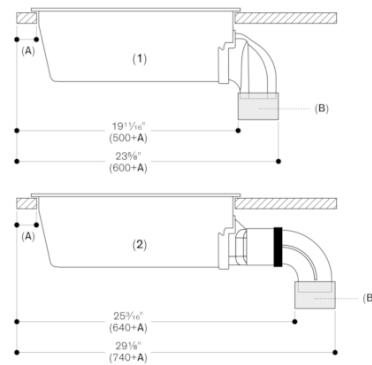
A: Surface mounting
 B: Flush mounting (only VL414)
 C: Exhaust to the left. Flat round connecting piece toward the front
 D: Exhaust to the right. Flat round connecting piece toward the back
 measurements in inches (mm)



measurements in inches (mm)

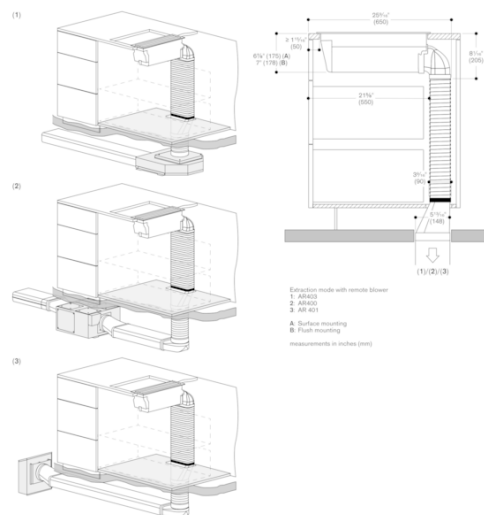


A: 1/8" (3.5 ± 0.5)
 measurements in inches (mm)



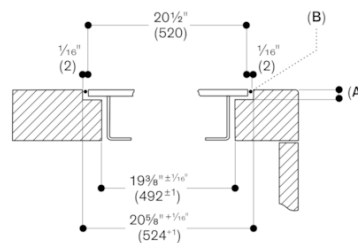
- 1: Direct installation
- 2: Installation with extension for deep countertop and metal ducting:
 - AD 851 041 (connecting piece for extension)
 - AD 854 000 (flat duct connecting piece, metal)
 - AD 854 030 (flat duct bend, 90°, vertical, metal)

A: ≥ 1 1/8" (50)
 B: Connecting piece
 measurements in inches (mm)



Extraction made with remote blower
 1: AR403
 2: AR402
 3: AR 401
 A: Surface mounting
 B: Flush mounting
 measurements in inches (mm)

Cross-section



A: 1/8" (3.5 ± 0.5)
 B: Fill with silicone
 Measurements in inches (mm)

Page 3

The technical drawings show the front and side views of the 1000 Series refrigerator. The front view includes dimensions for the overall width (33 1/2" / 853 mm), height (69 1/2" / 1765 mm), and depth (24 1/2" / 619 mm). The side view shows the depth (24 1/2" / 619 mm) and height (69 1/2" / 1765 mm). The drawings also show the internal layout, including the freezer compartment (10 1/2" / 267 mm) and the refrigerator compartment (19 1/2" / 493 mm). The door is shown with a handle and a lock mechanism.

A: Surface mounting
B: Flush mounting (only VL414)

GAGGENAU