



Color Variants

VI492611

Stainless steel frame

Width 90 cm

Optional accessories

GP900001

Stainless steel frying sensor pan

GP900002

Stainless steel frying sensor pan

GP900003

Stainless steel frying sensor pan

GP900004

Stainless steel frying sensor pan

WP400001

Wok pan made of multiple-layer material

Installation Accessories

VA420000

Connection strip for combination with other Vario appliances of the 400 series for flush mounting

VA420010

Connection strip for combination with other Vario appliances of the 400 series for surface mounting

VI492611

Vario flex induction cooktop 400 series

Stainless steel frame

Width 90 cm

Flex function for combining the rectangular cooking areas
Free positioning of cookware inside combined cooking areas
Frying sensor function for temperature control in pans
Large cooking zone for pots up to ø 32 cm
Ideal for the original wok pan with round bottom, with wok ring
Easy control of all functions with bicoloured display
Solid stainless steel control knob
Precision crafted 3 mm stainless steel
For surface mounting with a visible edge or for flush mounting
Can be combined perfectly with other Vario appliances of the 400 series

Cooking zones

2 flex induction cooking areas 19x21,5 cm (2200 W, with booster 3600 W), linked together 38x21,5 cm (3300 W, with booster 3600 W).
2 flex induction cooking areas 19x21,5 cm (2200 W, with booster 3600 W), linked together 38x21,5 cm (3300 W, with booster 3600 W).
1 induction cooking zone ø 21 cm (2200 W, with booster 3700 W), automatically switches to ø 26 cm (2600 W, with booster 3700 W) and to ø 32 cm (3300 W, with booster 3700 W).

Handling

Control knobs with illuminated ring, cooking zone and output level markings.
Electronic power control in 12 output levels.
User friendly control with bicoloured display (white / orange).

Features

Flex function for rectangular cooking areas.
Frying sensor function.
Booster function.
Stopwatch.
Short-term timer.
Options menu.

Safety

Individual residual heat indicators.
Safety shut-off.

Planning notes

Depending on the type of installation (surface-mounted or flush-mounted), the specific location of the cut-out and the knob positions may vary.
The horizontal positioning of the knobs may be aligned with the specific cooking areas and zones.
The drawing "Installation of the control knob" must be observed if the panel is more than 23 mm thick (there must be a recess at the rear).
If combining several Vario appliances of the 400 series, a connection strip VA 420 must be placed between the appliances. Depending on the type of installation, the corresponding connection strip must be provided.
The bearing capacity and stability, in the case of thin worktops in particular, must be supported using suitable substructures. Take into account the appliance weight and additional loads.
Additional instructions for flush mounting:

Characteristics

Product name/family

Cooking zone ceramic

Construction type

Built-in

Energy input

Electric

Total number of positions that can be used at the same time

5

Type of control setting devices

Required niche size for installation (HxWxD)

93 x 885-889 x 492-492

Width of the appliance

908

Dimensions

93 x 908 x 520

Dimensions of the packed product (HxWxD)

111 x 1109 x 712

Net weight

21.142

Gross weight

23.5

Residual heat indicator

Separate

Location of control panel

External control

Type of external control possibility

Basic surface material

Ceramic

Color of surface

Black, Stainless steel

Color of frame

Stainless steel

Approval certificates

CSA, FCC

Length electrical supply cord

96

Knob Material

Full metal

Sealed Burners

No

heating with booster

All

Type of pan support

Natural Gas Connection Rating

LP Gas Connection Rating

Dimension of 1st heating element (in)

Power of heating element (kW)

Power of 1st burner

Dimension of 2nd heating element (in)

Power of 2nd heating element (kW)

3.3

Power of 2nd burner

Dimension of 3rd heating element (in)

Power of 3rd heating element (kW)

Power of 3rd burner (BTU)

Dimension of 4th heating element (in)

Power of 4th heating element (kW)

Power of 4th burner (BTU)

Dimension of 5th heating element (in)

Power of 5th heating element (kW)

Power of 5th burner

Dimension of 6th heating element (in)

Power of heating element (kW in boost)

[3.6]

3.6

Power of 3rd heating element (kW in boost)

Power of 4th heating element (kW in boost)

Power of 5th heating element (kW in boost)

Power of 6th heating element (kW in boost)

3.6

Connection rating

9360

Gas connection rating

Fuse protection

47

Voltage

208-240

Frequency

60

Universal Product Code

825225933328

Main colour of product

Black

Installation is possible in worktops made of stone, synthetics or solid wood. Heat resistance and watertight sealing of the cut edges must be observed. Concerning other materials please consult the worktop manufacturer.

The groove must be continuous and even, so that uniform placing of the appliance on the gasket is ensured. Do not use discontinuous lining.

The joint width may vary due to size tolerances of the combinations and of the worktop cut-out.

If installing several appliances in individual cut-outs allow for a division bar of minimum 50 mm between the individual cut-outs.

Operates with magnetic (induction) iron pots and pans only. For an optimal heat distribution, the use of sandwich bottom cookware is recommended.

Appliance can be snapped into the worktop from above.

Appliance weight: approx. 21 kg.

Connection

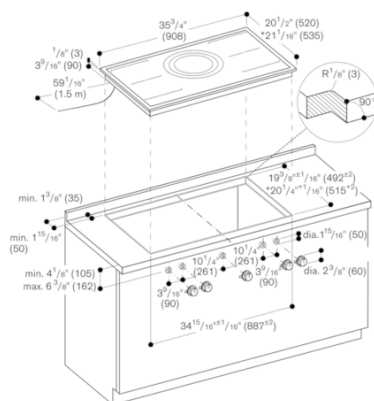
Total connected load 9.4 KW.

Total Amps: 47 A.

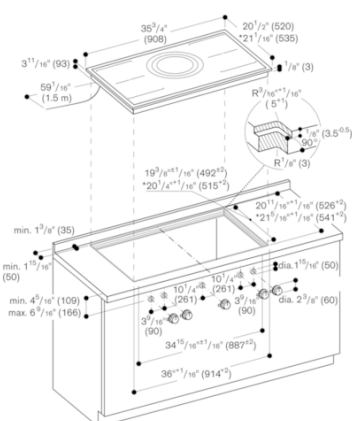
208 - 240 V / 60 Hz.

Connecting cable 1.0 m without plug.

GAGGENAU

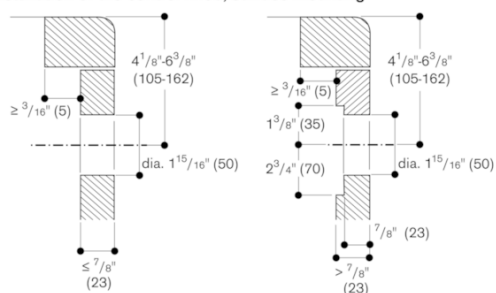


* with filler strip
For further installation options, see the installation instructions.



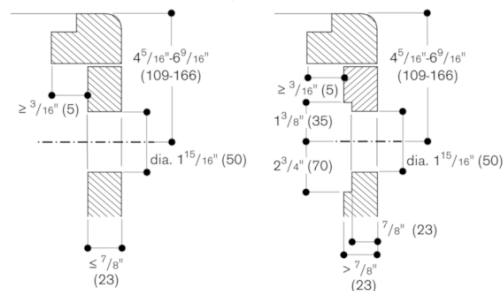
* with filler strip
For further installation options, see the installation instructions.

Installation of the control knob; surface mounting



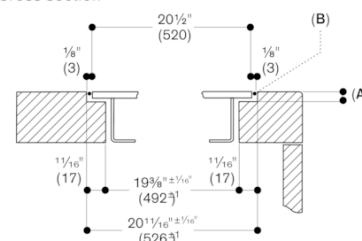
measurements in inches (mm)

Installation of the control knob; flush installation



measurements in inches (mm)

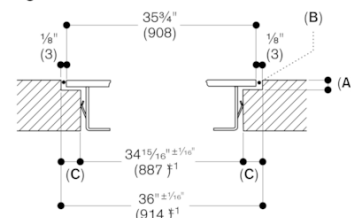
Cross-section



A: 1/8" (3.5^{0.5})
B: Fill with silicone

measurements in inches (mm)

Longitudinal section



A: 1/8" (3.5^{0.5})
B: Fill with silicone
C: 1/2" (13.5)

measurements in inches (mm)

