

Color Variants

VI422611
Stainless steel frame
Width 38 cm

Optional accessories

GP900001
Stainless steel frying sensor pan
GP900002
Stainless steel frying sensor pan
GP900003
Stainless steel frying sensor pan

Installation Accessories

VA420000
Connection strip for combination with other Vario appliances of the 400 series for flush mounting
VA420010
Connection strip for combination with other Vario appliances of the 400 series for surface mounting

VI422611
Vario flex induction cooktop 400 series
Stainless steel frame
Width 38 cm

Flex function for combining the rectangular cooking areas
Free positioning of cookware inside combined cooking areas
Frying sensor function for temperature control in pans
Easy control of all functions with bicoloured display
Solid stainless steel control knob
Precision crafted 3 mm stainless steel
For surface mounting with a visible edge or for flush mounting
Can be combined perfectly with other Vario appliances of the 400 series

Cooking zones
2 flex induction cooking areas 19x24 cm (2200 W, with booster 3600 W), linked together 38x24 cm (3300 W, with booster 3600 W).

Handling
Control knobs with illuminated ring, cooking zone and output level markings.
Electronic power control in 12 output levels.
User friendly control with bicoloured display (white / orange).

Features
Flex function for rectangular cooking areas.
Frying sensor function.
Booster function.
Stopwatch.
Short-term timer.
Options menu.

Safety
Individual residual heat indicators.
Safety shut-off.

Planning notes
Depending on the type of installation (surface-mounted or flush-mounted), the specific location of the cut-out and the knob positions may vary.
The horizontal positioning of the knobs may be aligned with the specific cooking areas.
The drawing "Installation of the control knob" must be observed if the panel is more than 23 mm thick (there must be a recess at the rear).
If combining several Vario appliances of the 400 series, a connection strip VA 420 must be placed between the appliances. Depending on the type of installation, the corresponding connection strip must be provided.
The bearing capacity and stability, in the case of thin worktops in particular, must be supported using suitable substructures. Take into account the appliance weight and additional loads.
Additional instructions for flush mounting:
Installation is possible in worktops made of stone, synthetics or solid wood. Heat resistance and watertight sealing of the cut edges must be observed. Concerning other materials please consult the worktop manufacturer.
The groove must be continuous and even, so that uniform placing of the appliance on the gasket is ensured. Do not use discontinuous lining.
The joint width may vary due to size tolerances of the combinations and of the worktop cut-out.

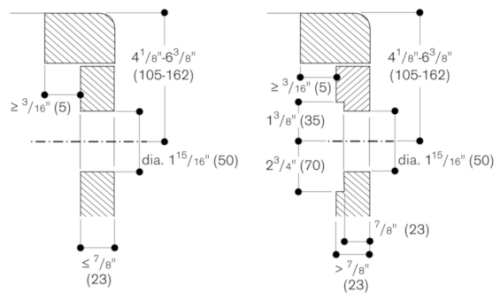
Characteristics
Product name/family
Vario/Domino cooking zone cera
Built-in / Free-standing
Built-in
Energy input
Electric
Total number of positions that can be used at the same time
2
Required niche size for installation (HxWxD)
93 x 360 x 492
Width of the appliance
380
Dimensions
93 x 380 x 520
Dimensions of the packed product (HxWxD)
125 x 598 x 658
Net weight (kg)
8.469
Gross weight (kg)
9.8
Residual heat indicator
Location of control panel
External control
Basic surface material
Ceramic
Color of surface
Black, Stainless steel
Color of frame
Stainless steel
Approval certificates
CSA, FCC
Length electrical supply cord
96
Connection rating (W)
3120
Gas connection rating (W)
Fuse protection (A)
15
Voltage (V)
208-240
Frequency (Hz)
60

Consumption and connection features
2021-09-03
Page 1

If installing several appliances in individual cut-outs allow for a division bar of minimum 50 mm between the individual cut-outs.
Operates with magnetic (induction) iron pots and pans only. For an optimal heat distribution, the use of sandwich bottom cookware is recommended.
Appliance can be snapped into the worktop from above.
Appliance weight: approx. 8 kg.

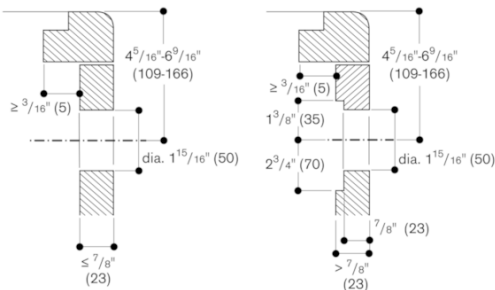
Connection
Total connected load 3.1 KW.
Total Amps: 15 A.
208 - 240 V / 60 Hz.
Connecting cable 1.0 m without plug.

Installation of the control knob; surface mounting

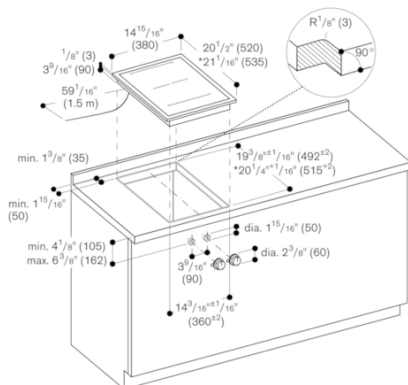


measurements in inches (mm)

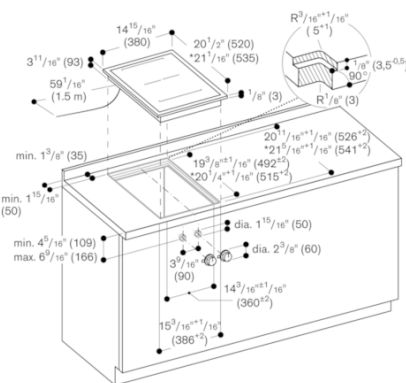
Installation of the control knob; flush installation



measurements in inches (mm)

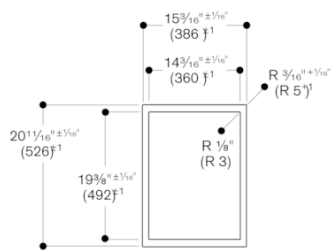


* with filler strip
For further installation options, see the installation instructions.



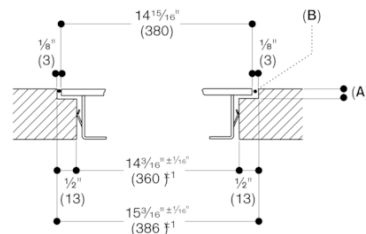
* with filler strip
For further installation options, see the installation instructions.

View from above



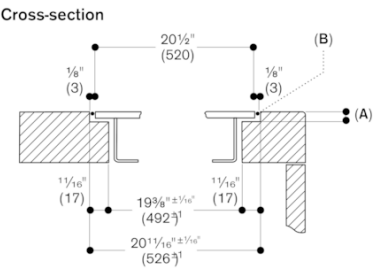
measurements in inches (mm)

Longitudinal section



A: 1/8 inch (3.5 mm)
B: Fill with silicone

measurements in inches (mm)



A: 1/8" (3.5^{±0.5})
B: Fill with silicone
measurements in inches (mm)