

Color Variants

VI414613  
Stainless steel frame  
Width 38 cm

Optional accessories  
GP900004  
Stainless steel frying sensor pan.  
WP400001  
Wok pan made of multiple-layer material  
WZ400001  
Wok ring attachment for wok pan

VI414613  
Vario induction cooktop 400 series  
Stainless steel frame  
Width 38 cm

12 5/8" cooking zone with booster function  
Ideal for the original wok pan with round bottom, with wok ring  
Frying sensor function for temperature control in pans  
Easy control of all functions with bicoloured display  
Solid stainless steel control knob  
Precision crafting of 3 mm stainless steel  
For surface mounting with a visible edge or for flush mounting  
Can be combined perfectly with other Vario appliances of the 400 series

Cooking zones  
1 induction cooking zone ø 8 1/4" (21cm) (2200 W, with booster 3700 W), automatically switches to ø 10 1/4" (26cm) (2600 W, with booster 3700 W) and to ø 12 5/8" (3300 W, with booster 3700 W).

Handling  
Control knobs with illuminated ring, cooking zone and output level markings.  
Electronic power control in 12 pakāpes (1...12).  
User friendly control with bicoloured display (white / orange).

Features  
Frying sensor function.  
Booster function.  
Stopwatch.  
Short-term timer.  
Options menu.  
Power management.  
Cooktop-based ventilation control (with suitable hood).  
Home network integration for digital services (Home Connect) wireless via WiFi.  
The use of the Home Connect functionality depends on the Home Connect services, which are not available in every country. For further information please check: home-connect.com.

Safety  
Operation indicator.  
Pot detection.  
2-Stage Hot Surface Indicators  
Safety shut-off.

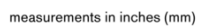
Planning notes  
Depending on the type of installation (surface-mounted or flush-mounted), the specific location of the cut-out and the knob positions may vary.  
The drawing "Installation of the control knob" must be observed if the panel is more than 23 mm thick (there must be a recess at the rear).  
If combining several Vario appliances of the 400 series, a connection strip VA 420 must be placed between the appliances. Depending on the type of installation, the corresponding connection strip must be provided.  
The bearing capacity and stability, in the case of thin worktops in particular, must be supported using suitable substructures. Take into account the appliance weight and additional loads.  
Additional instructions for flush mounting:

Product Features
Product name / series name
Vario/Domino cooking zone cera
Construction type
Built-in
Energy source
Electric
Total number of cooktop burners
1
Required cutout size (HxWxD) (mm)
93 x 360 x 492
Width of the product (mm)
380
Overall appliance dimensions (HxWxD) (mm)
93 x 380 x 520
Product packaging dimensions (HxWxD) (mm)
145 x 585 x 640
Net weight (kg)
11.466
Gross weight (kg)
12.7
Residual heat indicator
Location of control panel
External control
Basic surface material
Ceramic
Color of surface
Black, Stainless steel
Color of frame
Stainless steel
Approval certificates
CSA, FCC
Power cord length (cm)
150

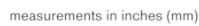
Consumption and connection features
Watts (W)
3120
Gas connection rating (W)
Current (A)
15
Volts (V)
208-240
Frequency (Hz)
60
2020-09-08
Page 1

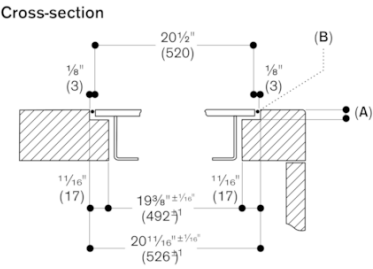
Installation is possible in worktops made of stone, synthetics or solid wood. Heat resistance and watertight sealing of the cut edges must be observed. Concerning other materials please consult the worktop manufacturer.  
The groove must be continuous and even, so that uniform placing of the appliance on the gasket is ensured. Do not use discontinuous lining.  
The joint width may vary due to size tolerances of the combinations and of the worktop cut-out.  
If installing several appliances in individual cut-outs allow for a division bar of minimum 50 mm between the individual cut-outs.  
Operates with magnetic (induction) iron pots and pans only. For an optimal heat distribution, the use of sandwich bottom cookware is recommended.  
Appliance can be snapped into the worktop from above.  
Appliance weight: approx. 11.

Connection  
Total connected load 3.1 KW.  
Connecting cable 1.5 m without plug.  
Power consumption standby/display off 0.5 W.  
Power consumption standby/network 1.4 W.  
Please check the user manual for how to switch off the WiFi module.  
Total Amps: 15 A.  
208 - 240 V / 60 Hz.



measurements in inches (mm)





A:  $\frac{1}{8}$ " (3.5<sup>±0.5</sup>)

B: Fill with silicone

measurements in inches (mm)