

JJD3024HM

## JennAir® NOIR 24" Warming Drawer



<http://www.jennair.com>

### Key Features:

- Concealed Controls
- Glass-Bottom Drawer Design
- Smooth Close Full-Extension Drawer
- .6 Cubic Foot Capacity
- 400-Watt Heating Element

### Product Dimensions:

Height: 5 9/16

Width: 23 7/16

Depth: 22 3/8

### Additional Information:

[Use And Care Guide](#)

[Dimension Guide](#)

[Installation Guide](#)

[Warranty Certificate](#)



Available in:

 Stainless Steel

®Registered trademark/TM Trademark of Whirlpool, U.S.A. © 2021 Whirlpool Corporation. All Rights Reserved.

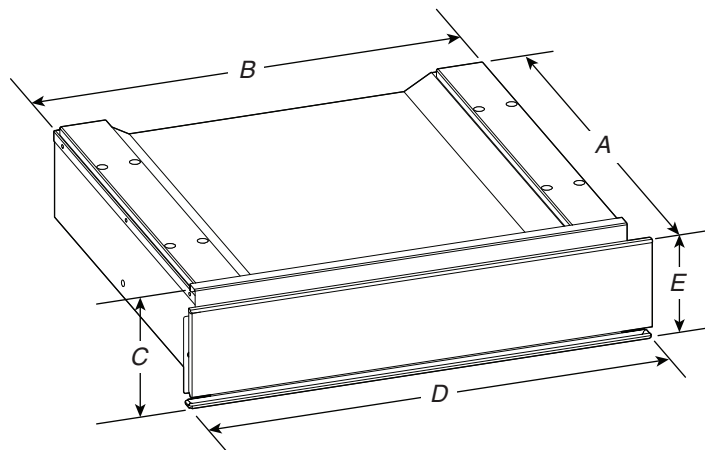
All other trademarks are owned by their respective companies.

Because Whirlpool Corporation policy includes a continuous commitment to improve our products, we reserve the right to change materials and specifications without notice. We also reserve the right to discontinue or transition products without notice.

Manufacturer's Suggested Retail Price (MSRP) and Minimum Advertised Price (MAP) provided for reference purposes only. Dealer alone determines advertised and retail prices.

Created On: Tuesday, May 17, 2022 10:46:46

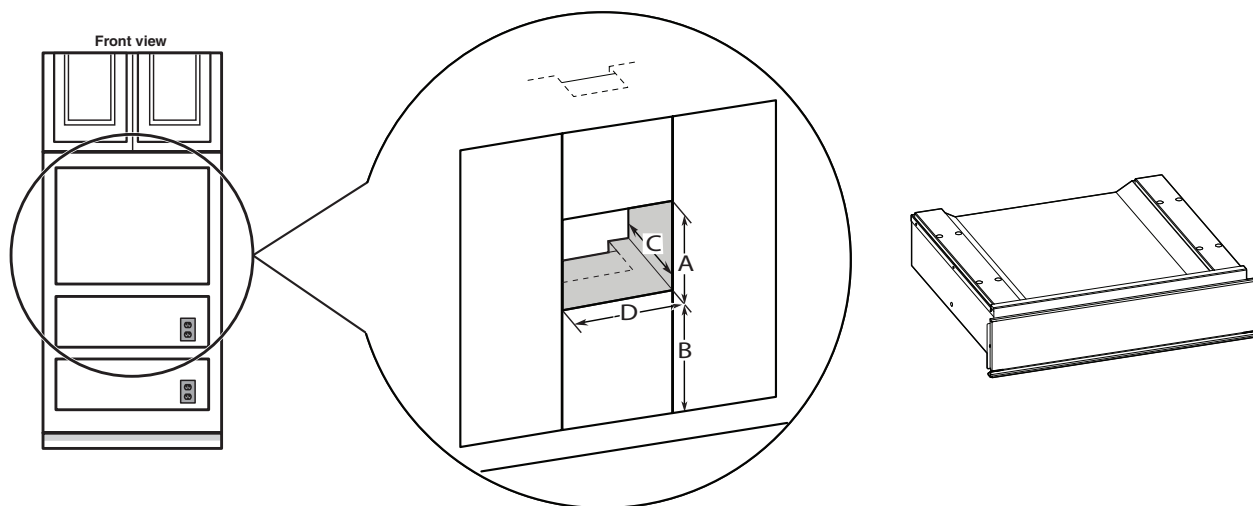
## Product Dimensions



- A.  $21\frac{5}{8}$ " (55.0 cm) oven depth
- B.  $21\frac{13}{16}$ " (55.4 cm) recessed width
- C.  $5\frac{9}{16}$ " (14.1 cm) recessed height
- D.  $23\frac{7}{16}$ " (59.5 cm) overall width
- E.  $4\frac{9}{16}$ " (11.7 cm) drawer front height

## Clearance Dimensions

### Warming Drawer Installed Below Oven



- A.  $22\frac{15}{16}$ " (58.2 cm) cutout height for both oven and warming drawer
- B. 31" (78.7 cm) minimum/recommended height from floor
- C.  $21\frac{5}{8}$ " (55.0 cm) cutout width
- D.  $23\frac{5}{8}$ " (60.0 cm) minimum cabinet width

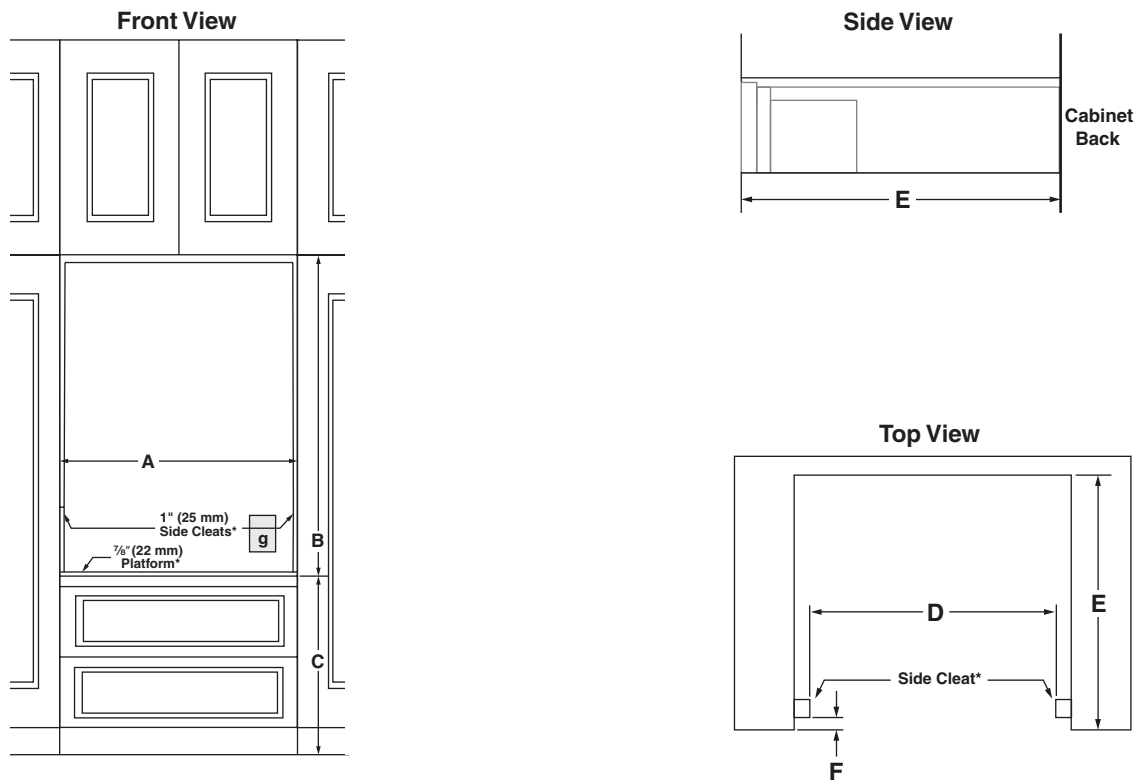
### NOTES:

- If installed with an oven, no separator between them.
- Warming drawer can be installed under a single oven.
- The warming drawer cannot be leveled after being installed.

For outdoor installation, follow the cutout dimensions for a single warming drawer. Install the outdoor warming drawer in a permanent fixture.

## Clearance Dimensions - Flush Installation

### Warming Drawer Installed Below Oven



A	Width of flush inset cutout (minimum)	23 <sup>11</sup> / <sub>16</sub> " (60.2 cm)
B	Height of flush inset cutout (minimum)	23 <sup>3</sup> / <sub>4</sub> " (60.3 cm)
C	Bottom of cutout to floor (minimum)	If installed under model JMC6224 5" (12.7 cm) If installed under any other model 31" (78.7 cm)
D	Width of opening (minimum)	21 <sup>5</sup> / <sub>8</sub> " (55.0 cm) for JJD3024HM
E	Depth of cutout (minimum)	22 <sup>7</sup> / <sub>16</sub> " (57.05 cm) for JJD3024HM 22 <sup>1</sup> / <sub>2</sub> " (57.13 cm) for JJD3024HL
F	Depth to Side Cleat	13/16" (2.1 cm) for JJD3024HM and JJD3024HL
g	Recommended outlet location	

### Flush Installation Requirements

A 22<sup>9</sup>/<sub>16</sub>" (57.3 cm) minimum cutout depth is required.

These dimensions will result in a 1/8" (3 mm) reveal on all sides of the warming drawer.

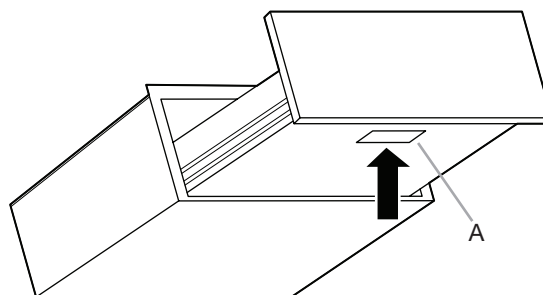
\*The front face of the cleats and platforms will be visible and should be treated as a finished surface.

## Electrical Requirements

A copy of the above code standards can be obtained from:

National Fire Protection Association  
1 Batterymarch Park  
Quincy, MA 02169-7471  
CSA International  
8501 East Pleasant Valley Road  
Cleveland, OH 44131-5575

- A 120 V, 60 Hz, AC only, 15 A fused, electrical circuit is required. A time-delay fuse or circuit breaker is also recommended. It is recommended that a separate circuit serving only this warming drawer be provided.
- The model/serial/rating plate is located beneath the drawer, on the drawer. See the illustration below.



A. Model/serial/rating plate

### **⚠ WARNING**



#### **Electrical Shock Hazard**

**Plug into a grounded 3 prong outlet.**

**Do not remove ground prong.**

**Do not use an adapter.**

**Do not use an extension cord.**

**Failure to follow these instructions can result in death, fire, or electrical shock.**

**IMPORTANT:** The warming drawer must be electrically grounded in accordance with local codes and ordinances, or in the absence of local codes, with the National Electrical Code, ANSI/NFPA 70 or Canadian Electrical Code, CSA C22.1.

If codes permit and a separate ground wire is used, it is recommended that a qualified electrical installer determine that the ground path is adequate.

## INSTALLATION INSTRUCTIONS

### Install Warming Drawer

### **⚠ WARNING**

#### **Excessive Weight Hazard**

**Use two or more people to move and install warming drawer.**

**Failure to do so can result in back or other injury.**

1. Turn off power supply. Using 2 or more people, move warming drawer close to its final location. Remove and discard shipping materials, tape, and film from the warming drawer. Remove and set aside racks and other parts from inside warming drawer.
2. Check that the warming drawer control knob is set to the Fan position.
3. Support the warming drawer on a sturdy surface level with the cutout opening.

### **⚠ WARNING**



#### **Electrical Shock Hazard**

**Plug into a grounded 3 prong outlet.**

**Do not remove ground prong.**

**Do not use an adapter.**

**Do not use an extension cord.**

**Failure to follow these instructions can result in death, fire, or electrical shock.**

4. Plug the power supply cord into the grounded 3 prong outlet.
5. Slide the warming drawer over halfway into the cutout opening.
6. Open warming drawer and slowly push against the front panel to slide the drawer completely into the cabinet until the flanges on the front panel meet the cabinet face.