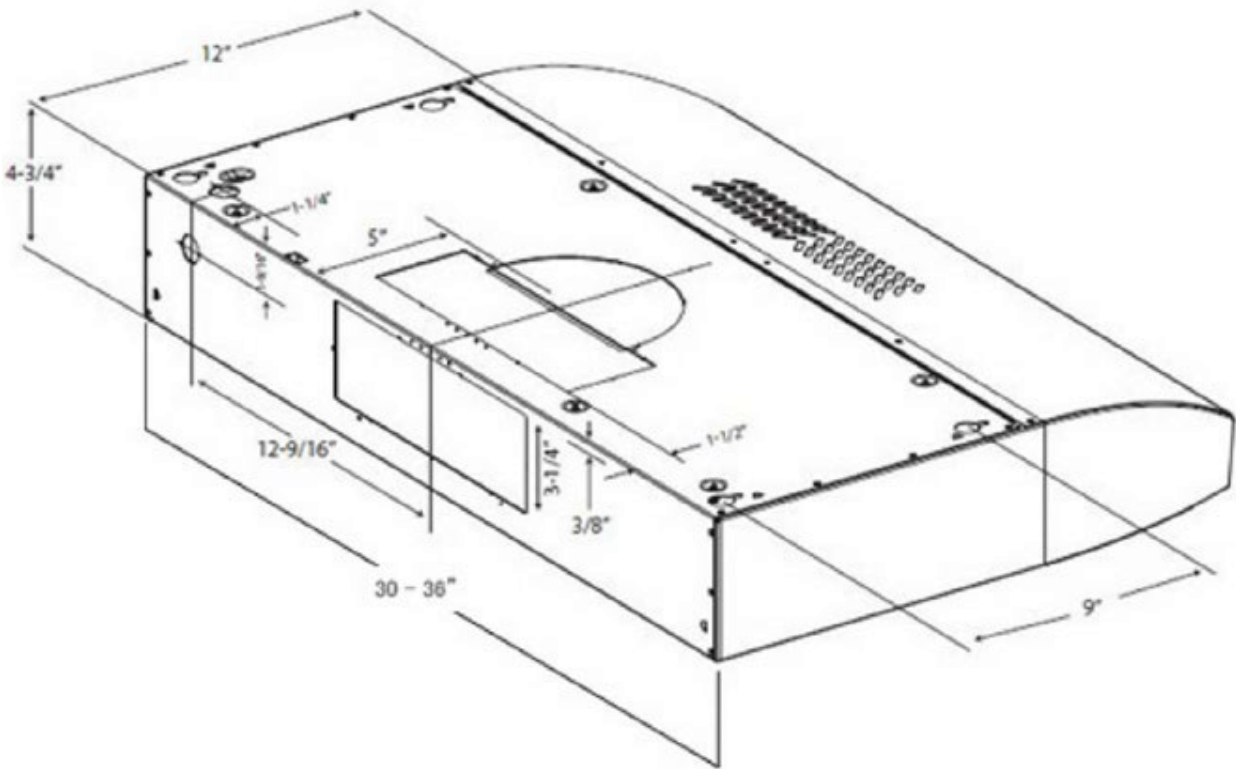


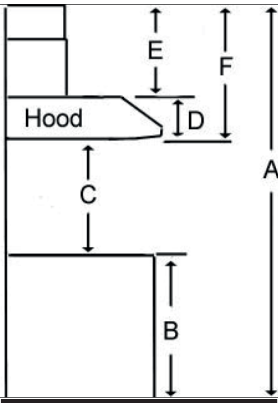


Selected Model	
Model number	EAI430SS
Manufacturer	ELICA
Exterior Appearance	
Color	Stainless Steel
Dimensions	
Dimensions	30" (W) X 20" (D) X 4¾" (H)
Features	
Controls	Multi-Function Electronic with black glass touch display
Illumination	2, 2.5W Premium LED lamps, Infinitely dimmable (bulbs included)
Blower Type	430 CFM, 4- Speed
CRS CFM Reduction (< 300 CFM)	Included Function
Blower Performance	Speed 1, 160 CFM, 1.4 Sones
	Speed 2, 240 CFM, 3.1 Sones
	Speed 3, 310 CFM, 4.9 Sones
	Speed 4, 430 CFM, 7.1 Sones
Filter Type	2 Stainless Steel Baffle Filters
Ducting	Ducted or Recirculating Installation (Recirculating Kit Sold Separately)
Duct transition	3¼" X 10" (Top or Rear)
Electrical Requirements	
Electrical requirements	120V-60 HZ / 445 Watt at 3.6 Amps
Accessories (optionnal)	
Recirculating Kit	KIT02178
7" round duct transition (top)	KIT02723 Back Draft Damper included
Warranty	
Complete 2 years warranty	Entire Appliance; In-Home; Parts & Labour

Dimensions



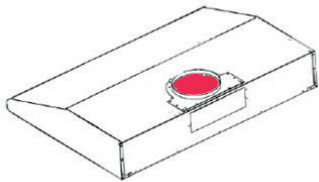
Installation



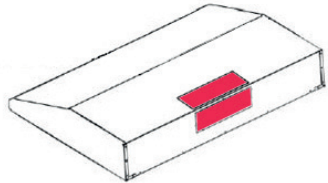
A	Floor to ceiling Height	TBD
B	Floor to counter Top Height (standard)	36"
C	Recommended Height between cooking surface and bottom of the hood	27" min. - 30" max
D	Hood Height	4 3/4"
E	cabinet Height	TBD

Duct transition

7" Round (Top)



3 1/4" X 10" (Top and Rear)



The information contained herein is based on sources that we believe to be reliable, but is not guaranteed by us, may be incomplete or may change without notice