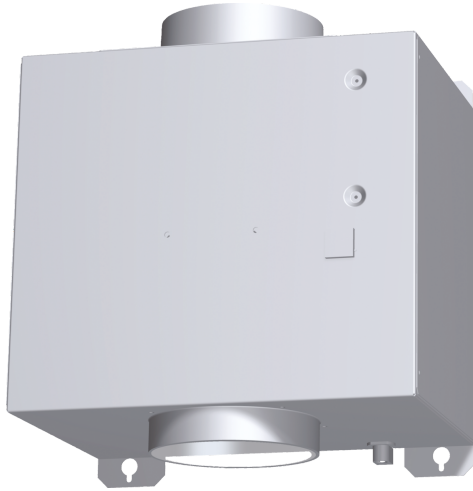


## Blower DHI1FZUC



### In-Line Blower Gives You the Appropriate CFM's Needed for Your 800 Series Downdraft Ventilation Hood

- Mounts Outside of the Downdraft, and Installs Inside the Home in the Attic or Basement Run of Duct Work
- 600 CFM on High Speed



EXTNCB25 25' Blower Connection Cable

## **Blower DHI1FZUC**

### **In-Line Blower Gives You the Appropriate CFM's Needed for Your 800 Series Downdraft Ventilation Hood**

---

#### **Key Features**

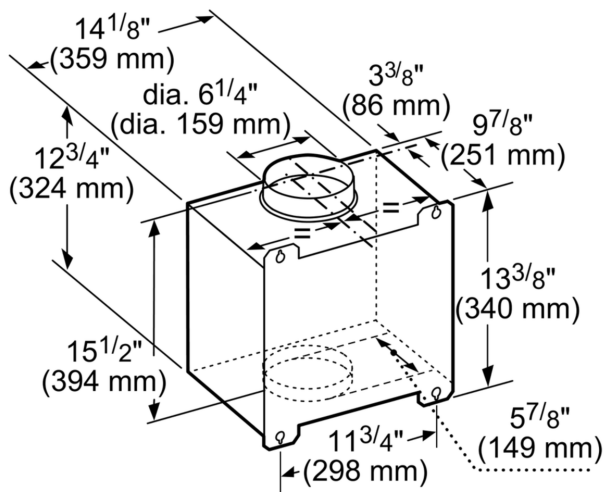
##### **Convenience**

- Use the EXTNCB25 Blower Cable Connection Accessory for install with select hoods. Separate purchase required.

##### **Design**

- Designed to be mounted inline with the ducting installation

## Blower DHI1FZUC



measurements in inches (mm)